

CURVE DATA

NO.	DELTA	R	L	T	NO.
23	20°47'30"	500.00	141.44	91.73	23
24	20°47'30"	450.00	103.30	82.56	24
44	74°46'17"	100.00	47.80	27.57	44
45	10°00'00"	100.00	28.82	15.17	45
46	13°45'00"	100.00	33.56	17.31	46
47	03°15'00"	100.00	57.27	28.65	47
48	70°42'28"	960.00	1185.84	648.92	48
49	72°55'24"	910.00	1157.87	612.07	49
50	2°02'00"	1400.00	937.85	272.26	50
51	52°15'00"	1350.00	1231.81	462.07	51
52	10°15'00"	1300.00	212.56	116.59	52
53	16°20'00"	1300.00	363.07	182.70	53
54	14°30'00"	1300.00	379.51	194.64	54
55	12°00'00"	1200.00	372.27	184.64	55
56	10°30'00"	1850.00	337.03	169.97	56
57	18°30'00"	1850.00	397.34	201.29	57
58	09°00'00"	1850.00	258.31	123.36	58
59	3°00'00"	1850.00	162.36	82.27	59
60	1°00'00"	1750.00	130.10	66.54	60
61	18°58'39"	850.00	281.54	142.07	61
62	2°00'00"	850.00	311.54	157.54	62
63	42°00'00"	800.00	366.43	207.09	63
64	21°00'00"	750.00	274.81	149.07	64
65	17°42'31"	920.00	416.03	226.90	65
66	03°37'47"	1540.00	98.20	43.17	66
67	00°00'12"	1550.00	165.57	82.86	67
68	04°42'00"	1500.00	258.29	127.94	68
69	00°25'00"	1450.00	166.81	83.27	69
70	03°00'00"	1450.00	80.14	40.68	70
71	2°26'43"	1450.00	393.60	198.83	71
72	08°33'16"	1450.00	156.77	78.53	72
73	50°00'00"	1100.00	575.96	294.10	73
74	04°45'47"	1100.00	178.83	88.10	74
75	12°41'02"	1150.00	254.58	128.82	75
76	08°33'16"	1150.00	171.70	85.00	76
16	12°01'37"	670.00	140.64	70.57	16
17	38°00'00"	100.00	45.04	24.22	17
18	11°47'41"	730.00	150.28	75.40	18
19	24°58'23"	670.00	252.03	143.37	19
20	25°42'18"	730.00	321.14	167.21	20
202	02°39'30"	1850.00	96.78	48.40	202
204	03°18'27"	450.00	101.37	50.70	204
205	03°48'58"	1800.00	119.89	59.97	205
206	33°11'02"	1800.00	1147.50	516.70	206
208	15°03'56"	900.00	218.91	109.53	208
237	09°09'12"	1010.00	167.23	85.81	237

See sheet 1 of 7 for notes pertaining to this subdivision.

Handwritten notes:
 20-119
 T.J.M.
 10:43
 AS-DNR
 703 W. 1/4
 Open A.L.

LEGEND

- GLD and/or B.L.M. monuments recovered - SEE SHEET 1 FOR TYPICAL D.N.R. OFFICIAL PRIMARY MONUMENT SET
- 1/2" aluminum cap on 5/8" x 30" rebar, secondary monument set.
- All other corners are 5/8" x 30" rebar set this survey.
- Curve Number

SCALE

1" = 200'

1 ACRE = 4047 HECTARES
 1 METER = 3.28083 U.S. SURVEY FEET
 1 HECTARE = 2.47104 ACRES

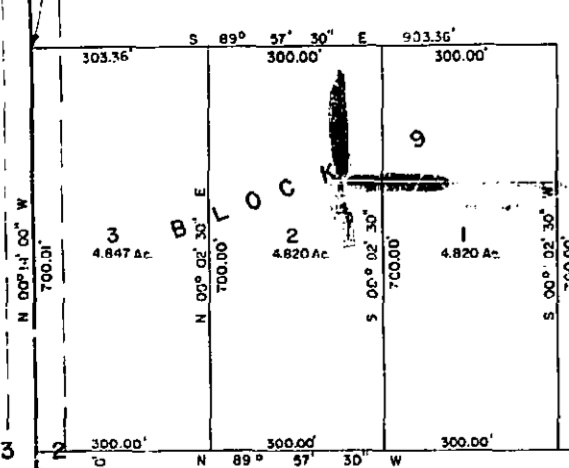
DATE OF SURVEY: OCTOBER 1, 1979
 NAME OF SURVEYOR: T. J. MURPHY, D.E.S., D.N.R.
 ENDING: APRIL 1, 1980

STATE OF ALASKA
 DEPARTMENT OF NATURAL RESOURCES
 DIVISION OF TECHNICAL SERVICES
 ANCHORAGE, ALASKA

ALASKA STATE LAND SURVEY 79-242
TRAPPER CREEK GLEN, ALASKA SUBDIVISION
 WITHIN SECTIONS 2, 8, 11, 17, 28, N, R, 6 W, S, 41 N
 SECTIONS 29, 30, 32, S, 20, 12, 18, W, 6 W

DRAWN BY: T.J.M.
 DATE: 10-20-79
 SCALE: 1" = 200'

APPROVAL: [Signature]
 DATE: 11-14-79
 FILE NO.: 79-242



A.S.L.S. 79-242

(SEE SHEET 2)

SHEET 3 OF 7